

OXFORD
BROOKES
UNIVERSITY

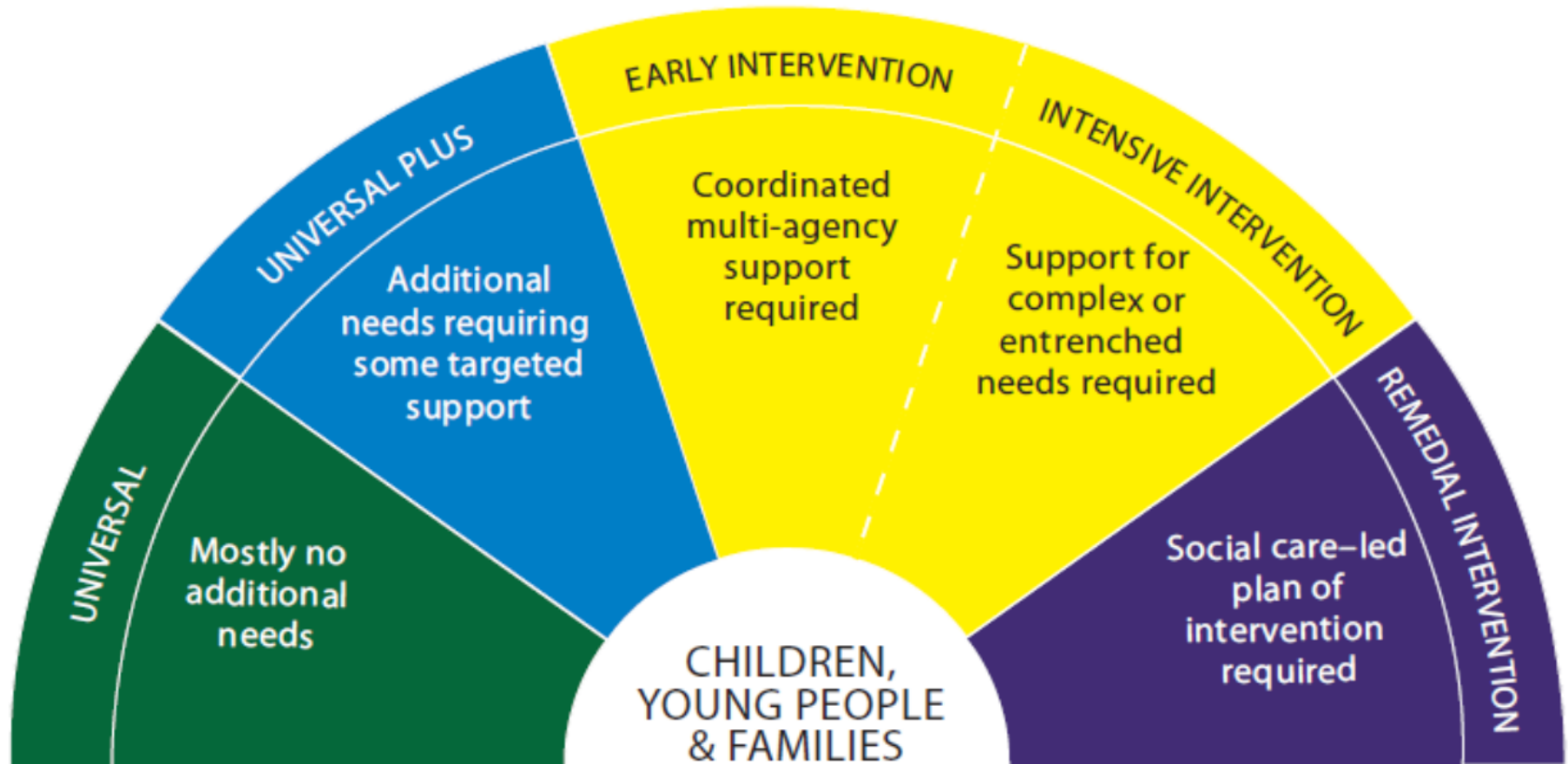


institute of
public care

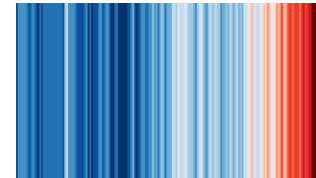
The National Agenda

© 2002 IPC Certificate in Commissioning
and Purchasing for Public Care.
All rights reserved.

National drivers in children's services



Who shapes national thinking on commissioning and procurement?



Health and Care Act 2022

New legislative measures to deliver joined up care for people who rely on multiple services.

Introduced 2 parts for statutory ICS's:

- **Integrated Care Board**
- **Integrated Care Partnership**

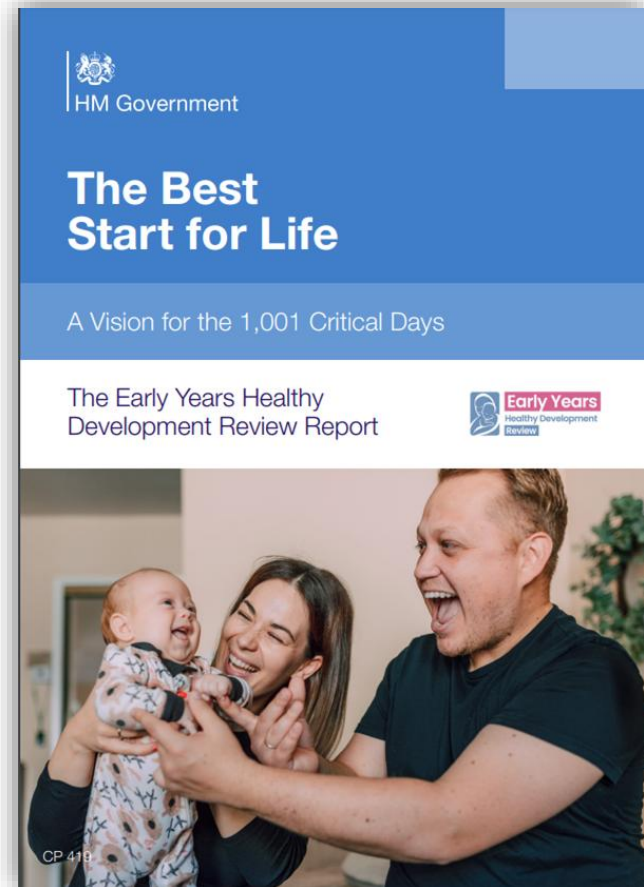
[How does the NHS in England work and how is it changing?](#)

(Video)



Early Intervention – The Best Start for Life

Considers the first 1001 days as ‘critical’ for the **foundations of lifelong emotional and physical wellbeing**

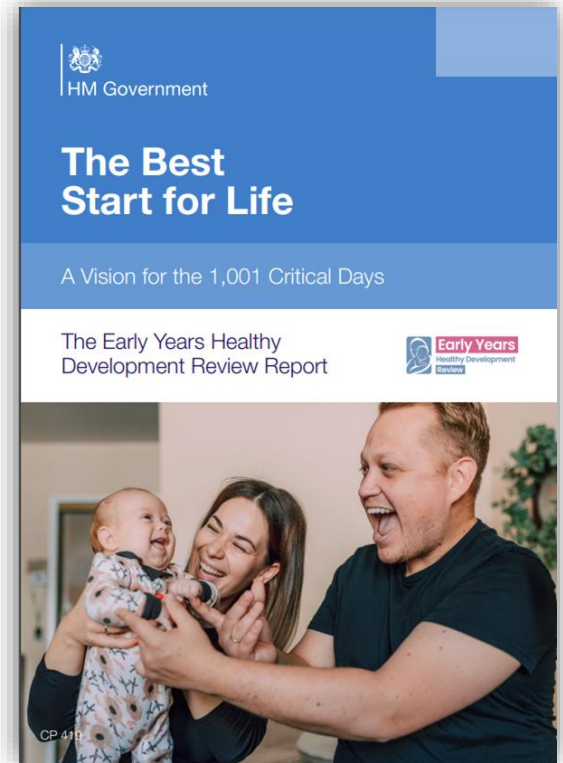


Early Intervention – The Best Start for Life

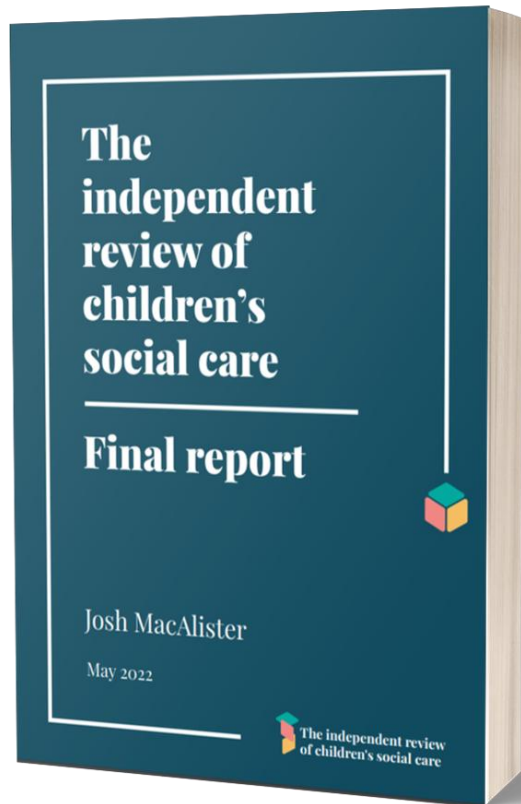
Outlines 6 requirements for the 'best start for life'

1. Seamless support for all families
2. Welcoming family hubs
3. Information given when needed
4. Effective and skilled workforce supporting families
5. Data collection, analysis, evaluation and response to local needs and outcomes
6. Effective leadership for change with agreed accountability

<https://www.youtube.com/watch?v=t5lhS9Fh47o>



Independent review of children's social care in England

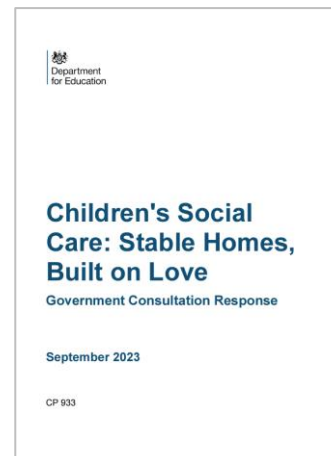


Stable Homes, Built on Love – Children's Social Care Reform (2023)

Introduces 6 'Ambitions' to transform Children's Social Care:

1. Family Help
2. Keeping children safe
3. Supporting families to help children
4. Make care better for children in care and care leavers
5. Children have great social workers
6. Improving the whole system for children and families

"I think the 6 ambitions listed are very important and valuable and should improve the lives of young people in or entering care. Support for the families is not talked about enough, so I am glad that is included in the 6 ambitions." – care leaver (DoE, 2023)



FFC pathfinder programme and FN pilot

Families first for children pathfinder:

Investing over £45m to design and test reforms around :

- Family help
- Child protection
- Family networks
- Safeguarding partners

Family Network Pilot

- Of the £45m, £7.8m allocated to a FNC pilot
- Testing the provision of flexible funding through family network support packages &
- Family group decision making

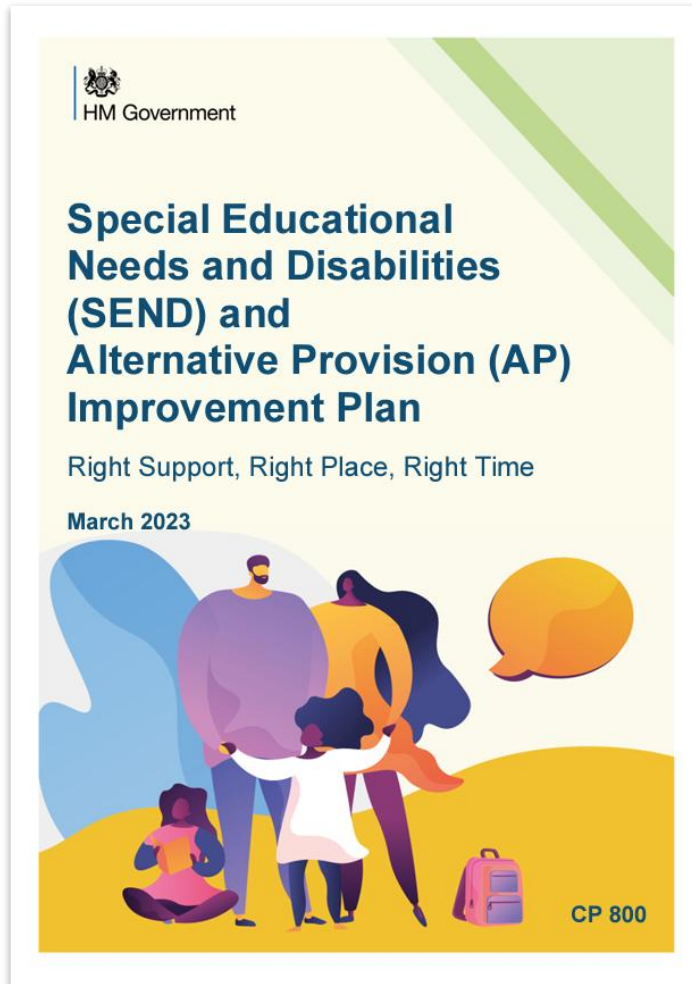
Early Intervention Foundation (2022) What works to improve lives of England's most vulnerable children: a review of interventions for a local family help offer

The report provides the details of 59 policies, practices and scalable interventions with evidence of improving child and family outcomes within five categories of vulnerability:

- problematic child behaviour
- family conflict
- parental mental health
- domestic abuse
- parental substance misuse



SEND & Alternative Provision Improvement Plan



National Standards for SEND and AP

Highly trained workforce and leadership

Use of digital tech to make systems easier to navigate

Improved preparation for adulthood

Improved accountability via inspections, performance dashboards and family partnerships

Additional £ and guidance on costs of provisions

Supported Accommodation



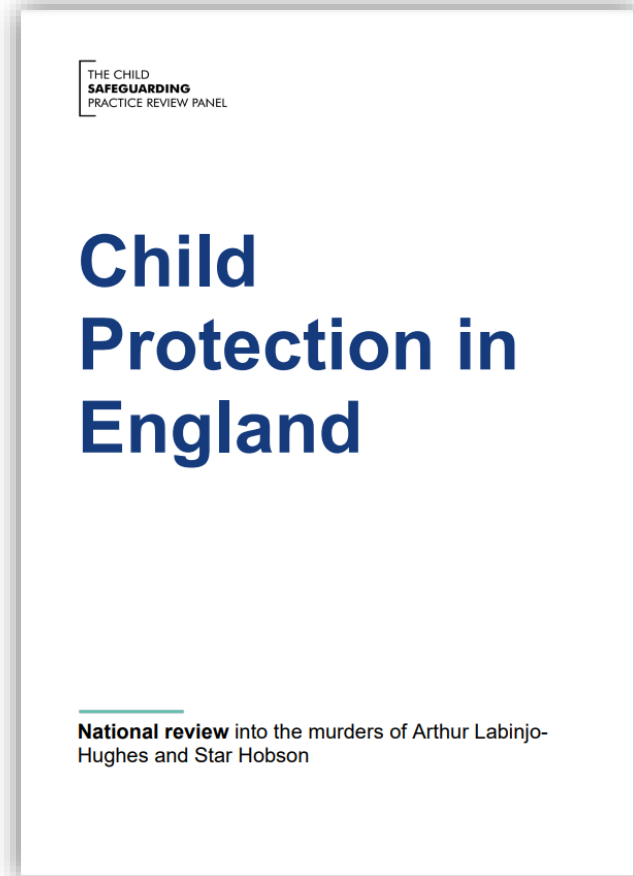
Guide to the Supported Accommodation Regulations including Quality Standards

March 2023

Child Protection in England

What went wrong?

- Information sharing issues and seeking between and within agencies
- A lack of robust critical thinking and challenge within and between agencies
- A need for sharper specialist child protection skills and expertise



Child Protection in England



Working Together to Safeguard Children 2023

A guide to multi-agency working
to help, protect and promote the welfare
of children

December 2023

Contextual safeguarding



Dr Firmin, Founder of
Contextual Safeguarding
– TED talk

Risks outside the home (ROTH) is sometimes referred to as **contextual safeguarding**

Some children experience abuse and exploitation outside the home. This is often referred to as “extra-familial harm”.

New UK Government (July 2024)

- Emphasis on community-based care / Neighbourhood Health Service
- Addressing workforce shortages – NHS and Social Care
- Addressing inequalities
- Mental Health Young Futures Hubs
- Modernise legislation – e.g., Mental Health Act to give people more autonomy
- Reducing gambling-related harm by strengthening protections/regulations

Any other legislation or emerging trends which impact your commissioning roles and responsibilities?

- Domestic Abuse Act (2021) ?
- Mental capacity Act (2005)?
- Children Act (2004)?
- Increasing use of unregulated placements?
- To name a few...

Key national drivers



- Integration
- Early help / edge of care
- Fixing the broken care market
- Complex needs support
- Child protection, including risks outside the home

Anything else?

On your landscape



On your landscape

In breakout groups:

1. Identify up to three common key themes or aspects of the national agenda / landscape affecting your organisation/s or service area/s at the moment.
2. What are the implications of each of these themes for you as commissioners?
 - i. What are the key challenges?
 - ii. What are opportunities to mitigate these challenges and work towards the desired outcome?
3. Be ready to feedback to the wider group your 3 'themes' and 1 challenge and 1 opportunity.

Contact us



<https://ipc.brookes.ac.uk>



ipc_courses@brookes.ac.uk



01865 790312



[institute-of-public-care-brookes](https://www.linkedin.com/company/institute-of-public-care-brookes)